

Altiris Deployment Solution 6.1

Managing Fujitsu Siemens PRIMERGY Server Systems

Comments... Suggestions... Corrections...

The User Documentation Department would like to know your opinion of this manual. Your feedback helps us optimize our documentation to suit your individual needs.

Fax forms for sending us your comments are included in the back of the manual.

There you will also find the addresses of the relevant User Documentation Department.

Certified documentation according DIN EN ISO 9001:2000

To ensure a consistently high quality standard and user-friendliness, this documentation was created to meet the regulations of a quality management system which complies with the requirements of the standard DIN EN ISO 9001:2000.

cognitas. Gesellschaft für Technik-Dokumentation mbH
www.cognitas.de

Copyright and Trademarks

Copyright © Fujitsu Siemens Computers GmbH 2004.

All rights reserved.

Delivery subject to availability; right of technical modifications reserved.

All hardware and software names used are trademarks of their respective manufacturers.

This manual is printed
on paper treated with
chlorine-free bleach.

Introduction

Getting started

Managing Fujitsu Siemens PRIMERGY Blade Servers

Contents

| | | |
|----------|--|----------|
| 1 | Introduction | 1 |
| 2 | Getting started | 3 |
| 3 | Managing Fujitsu Siemens PRIMERGY Blade Servers | 9 |
| 3.1 | Searching for PRIMERGY Blade Servers | 9 |
| 3.2 | Identifying the Enclosure in the Rack | 10 |
| 3.3 | Altiris Deployment Console | 11 |
| 3.4 | Sample Jobs | 12 |

1 Introduction

Altiris Deployment Solution 6.1 supports Fujitsu Siemens PRIMERGY servers, providing simple replacement and logical assignment functionality, a logical server administration and identification of Rack/Enclosure/Bays (as well as logical views of the server), and other supported features common to server management.

Fujitsu Siemens PRIMERGY servers use SNMP to gather specific Rack/Enclosure/Bay information. The PRIMERGY server can be accessed via SNMP and sends out notifications (SNMP Traps) every time the hardware changes or if any critical system status is reached. Altiris Deployment Server 6.1 inventories hardware information for each individual server and processes hardware changes such as replacement and deployment jobs.

This “Getting Started” Guide explains how to integrate Fujitsu-Siemens PRIMERGY servers with the Altiris Deployment Server 6.1 by using the SNMP control utility. This SNMP control utility is available from the Fujitsu Siemens PRIMERGY ServerView Suite Software CD or by sending an e-mail to fsc@altiris.com.

Changes since previous version

The ServerSupport CDs have been renamed:

| previous naming | new naming |
|------------------------|---|
| ServerSupport CD1 | PRIMERGY ServerView Suite Software CD |
| ServerSupport CD2 | PRIMERGY ServerView Suite Update CD for Windows |
| ServerSupport CD3 | PRIMERGY ServerView Suite Update CD for Linux |

2 Getting started

To set up a Fujitsu Siemens PRIMERGY server, make sure the following conditions apply:

- Altiris Deployment Solution 6.1 or higher has already been installed

For blade servers the following conditions must be met:

- Each managed PRIMERGY blade server has a valid IP address and community
- Each managed PRIMERGY blade server has at least one trap destination sending traps to Deployment Server
- (Optional) NIC 1 of each Fujitsu Siemens PRIMERGY blade server can connect to a Deployment Server. This allows the use of the automatic boot order changing feature when booting from an Altiris PXE Server. If you do not want NIC 1 connecting the Deployment Server, you can also configure the PXE boot order manually.
- (Optional) You can set up a name for each managed PRIMERGY server. The name will be displayed in the Deployment Console.

For all other Fujitsu Siemens PRIMERGY servers the following condition must be met:

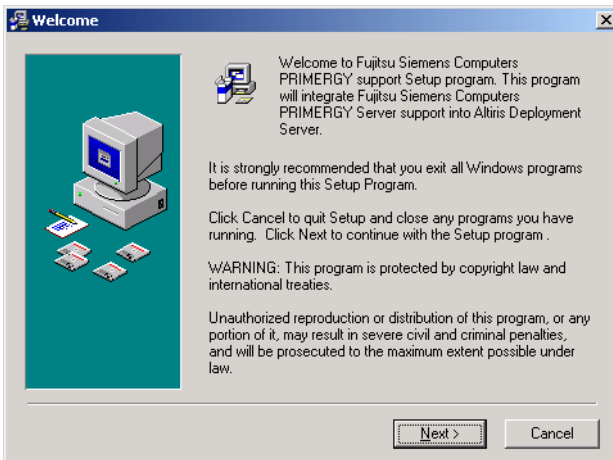
- If you want to use the PXE boot using the Altiris PXE Server, the PXE boot agent must be enabled in the BIOS setup of the PRIMERGY server. If necessary this option must be set manually.

Setting up Fujitsu Siemens PRIMERGY servers with MIB

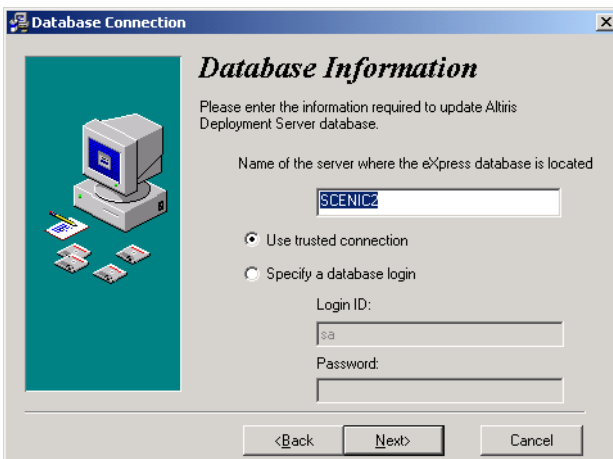
The install file (FSC Integration.exe) can be found on the Fujitsu Siemens Support CD 1. The ServerStart CD provides all necessary SNMP information for the Management Information Base (MIB) used to communicate between Deployment Server and the Fujitsu Siemens PRIMERGY server. From this CD you can install the tools to search for PRIMERGY servers on the network. The ServerStart and PRIMERGY ServerView Suite CDs (Software CD, Update CD for Windows/Linux) are integral parts of the PRIMERGY ServerView Suite that is included with your server system.

To set up Fujitsu Siemens PRIMERGY servers, launch FSC Integration.exe located on the Fujitsu Siemens PRIMERGY ServerView Suite Software CD. Follow these installation steps:

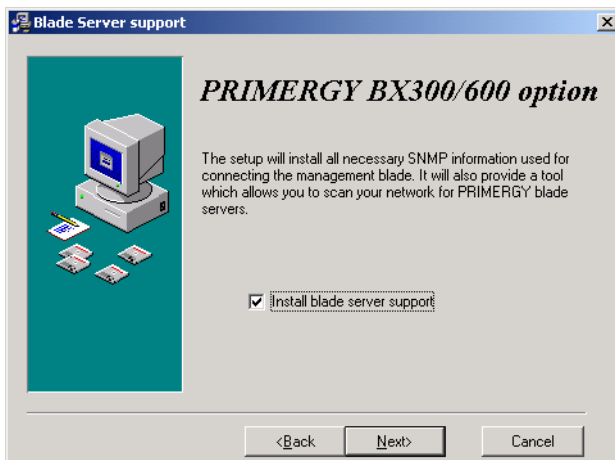
- ▶ Launch FSC Integration.exe and click Next.



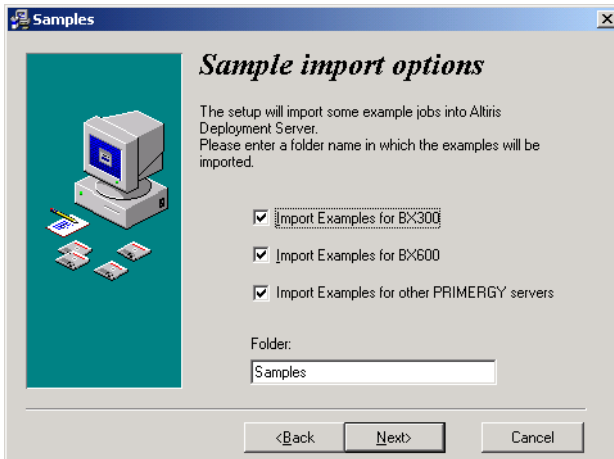
- ▶ Enter the MS SQL Server name and database credentials. Click Next.



- ▶ The installation requires a valid database logon to set up a connection for the instance of MS SQL Server running the Deployment Database (express database). Enter the hostname or IP address of the MS SQL Server (by default the same name as the computer name). Enter the database logon ID and password. If you want to use a trusted connection, leave the login ID empty.
- ▶ Selection of blade server support causes all SNMP information necessary for communication with the management blade to be installed. Click Next.



- ▶ Import sample jobs to manage Fujitsu Siemens PRIMERGY servers. Select Import Examples for the specific server types and identify a folder in the Client Access Point to import jobs. A folder named Fujitsu Siemens Computers will be created within the identified folder with sample jobs to manage Fujitsu Siemens PRIMERGY servers from within the Deployment Console.

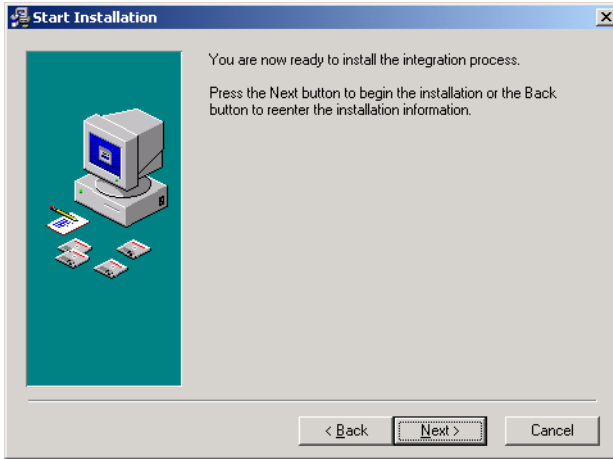


The sample jobs are specifically created for the deployment and management of Fujitsu Siemens PRIMERGY servers, including jobs with the following deployment tasks:

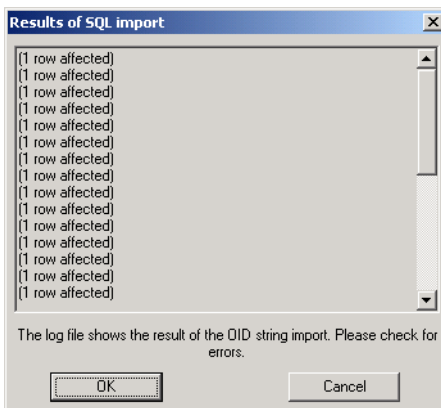
- Configuration of raid controllers
- Image and configuration files for a Windows 2000 and Windows 2003 Server Scripted Install
- Additional files to assist in managing Fujitsu Siemens blade servers

The sample files will be imported to the specified folder if you select the check boxes.

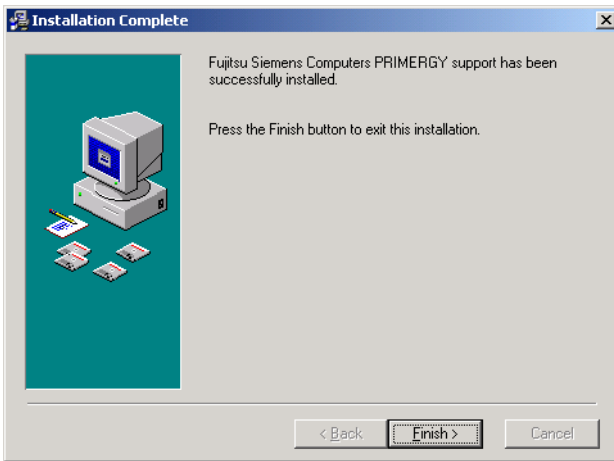
- ▶ Click **Next.** to begin the install. The necessary files will be installed automatically.



When completed, any errors from the SQL import will be listed in a summary dialog box.



- ▶ Click Finish to complete the install.



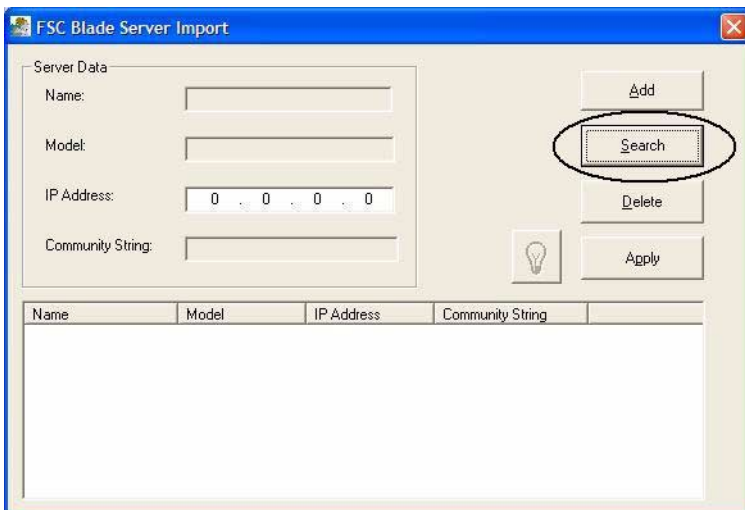
3 Managing Fujitsu Siemens PRIMERGY Blade Servers

After installing the Management Information Base (MIB) to communicate between the Fujitsu Siemens PRIMERGY blade servers and the Deployment Solution, you can use the installed utility tools, sample jobs, and standard DS features to deploy and manage the servers.

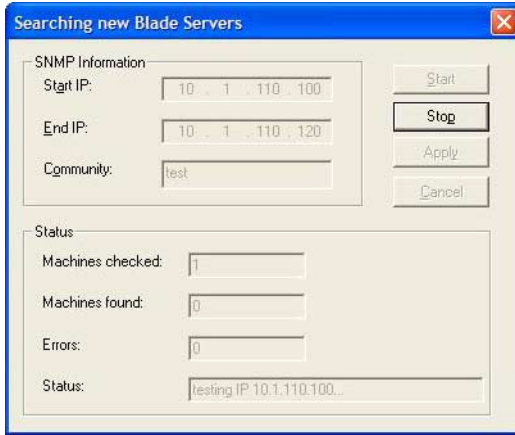
After installation, a new utility, SNMP based blade server import will appear in the Deployment Console. This utility lets you to search for Fujitsu Siemens PRIMERGY blade servers across the network, import the configuration data into the Deployment Database, and display it in the Deployment Console.

3.1 Searching for PRIMERGY Blade Servers

The easiest way to find Fujitsu Siemens PRIMERGY blade servers in the network is to use the Search functionality.



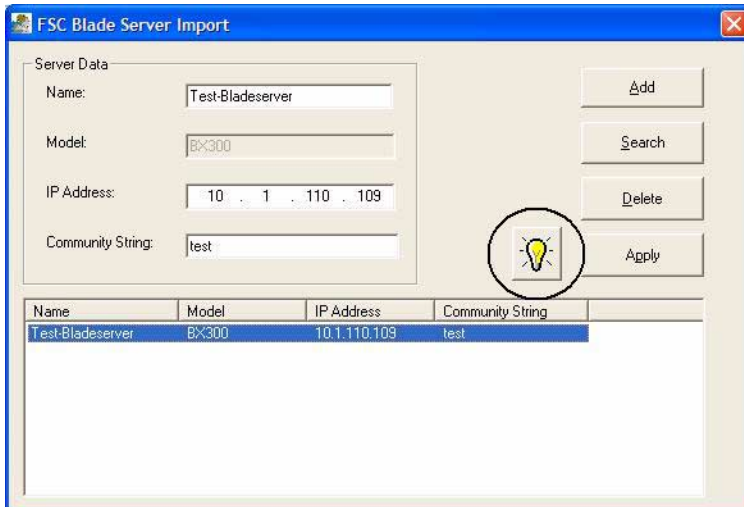
Within the search dialog you can define an IP address scope to scan for the Fujitsu Siemens PRIMERGY blade servers. You also have to enter a valid SNMP community string to access the servers.



3.2 Identifying the Enclosure in the Rack

In the main window of the import tool you will then get a list of available BX300 / BX600 blade servers.

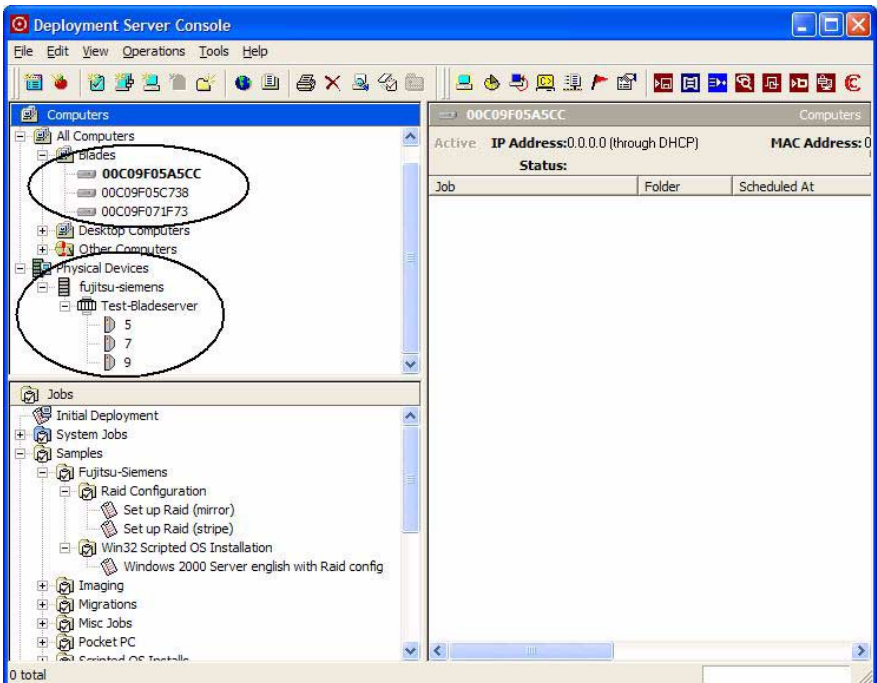
The light icon on the windows shows you the status of the LED located on the front panel of each enclosure. By clicking you can switch the LED on or off to identify the enclosure in the rack easier.



3.3 Altiris Deployment Console

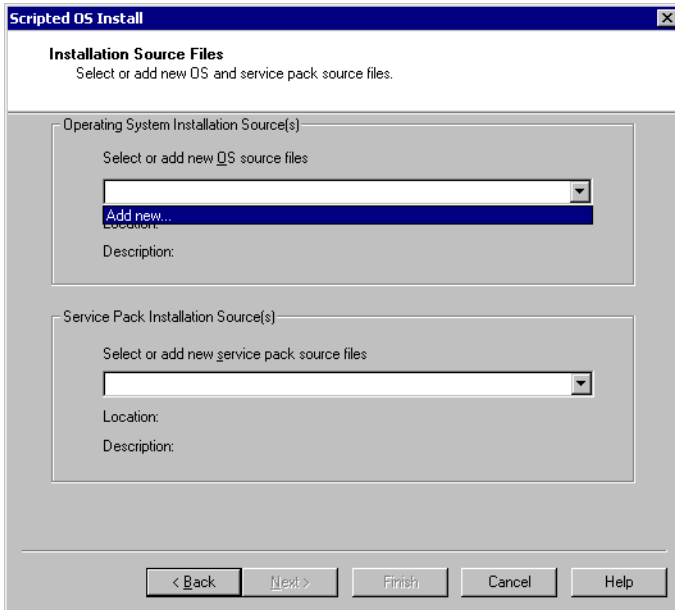
After adding one or more enclosures using the SNMP based PRIMERGY server import tool, the Deployment Server will be notified to start an SNMP based hardware inventory. This hardware inventory creates or updates computer records in the Deployment Database and also creates the physical view of the Rack/Enclosure/Bay. If a new computer has been created, its MAC address of the first NIC will be used as name.

The mechanism of SNMP based hardware inventory makes sure that a PRIMERGY server in a bay can be managed even before the Deployment Agent has been installed.



3.4 Sample Jobs

If you selected the installation of sample jobs during the install, you can now find them in the folder specified during the install. These sample jobs can exemplify how to configure the raid adapter and how to set up a scripted OS installation. Before using the scripted OS installation sample, make sure that you reopen the job, select or copy setup files, and enter a valid product key for the OS installation.



Fujitsu Siemens Computers GmbH
User Documentation
81730 Munich
Germany

Comments
Suggestions
Corrections

Fax: (++49) 700 / 372 00000

e-mail: manuals@fujitsu-siemens.com
<http://manuals.fujitsu-siemens.com>

Submitted by

Comments on Altiris Deployment Solution 6.1
Managing Fujitsu Siemens PRIMERGY Server Systems



Fujitsu Siemens Computers GmbH
User Documentation
81730 Munich
Germany

Comments
Suggestions
Corrections

Fax: (++49) 700 / 372 00000

e-mail: manuals@fujitsu-siemens.com
<http://manuals.fujitsu-siemens.com>

Submitted by

Comments on Altiris Deployment Solution 6.1
Managing Fujitsu Siemens PRIMERGY Server Systems



